



Revstar Part 3

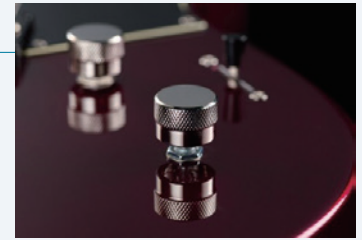
Inside Revstar's Electronics: Unlocking a Broader Sound

With versatile switching systems such as the Dry Switch, Focus Switch, and 5-way pickup selector, the new Revstar offers greater resonance, playability, and tonal versatility. This article explores the development behind these innovative electronics.

REVSTAR
MEET YOUR OTHER HALF

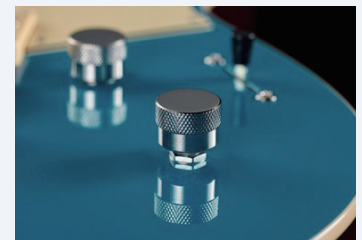
Dry Switch: A Legacy from the First Generation

Inherited from the first Revstar, the Dry Switch—now exclusive to the Element grade—was inspired by early prototypes equipped with P-90 pickups. It delivers crisp, single-coil-style tones from humbuckers without the noise or volume drop typical of coil-tapping. Element models feature higher output pickups, and the Dry Switch complements their character with a bright, articulate sound that sets Revstar apart from other electric guitars.

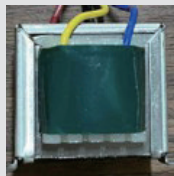


The birth of the Focus Switch

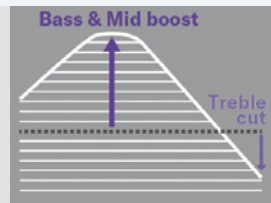
The Focus Switch, featured in the new-generation Revstar Professional and Standard models, **boosts low and mid frequencies** without the need for batteries. Combined with Yamaha's chambered body design and original pickups, it adds warmth and depth to an already clear and articulate tone—delivering **versatile sound** across genres.



Birthered from the development team's pursuit of **tonal variety**, the Focus Switch uses a custom-designed mini transformer. With no commercially available option, the team spent two years designing the optimal structure from the ground up. The result is a simple, battery-free control that enhances expressiveness and playability.



Mini transformer
3cm×2.5cm



By adding a mini transformer, the low and mid frequencies are boosted while the highs are slightly attenuated.

5-Way Selector: Unlocking Two Levels of Tonal Versatility

The new-generation Revstar achieves five tonal variations from just two pickups, going beyond the traditional 3-way selector.



It features Yamaha's unique "Half Phase Out" circuit, which subtly shifts the phase of one pickup in mix mode—recreating the airy, nuanced tones typically associated with 3-single-coil guitars.

This design not only expands tonal variety but also minimizes volume drop and noise during switching, providing refined sound and playability that set Revstar apart.



Pickup Operation by Selector Position.
Light shading indicates phase shift via "Half Phase Out."

The Ever-Evolving Revstar

Over the past three articles, we've explored the origins, evolution, and unique appeal of Revstar.

Designed to meet the diverse sonic and stylistic needs of today's guitar players, Revstar continues to evolve.

As music becomes ever more diverse and guitarists' expectations change rapidly,

Yamaha remains committed to listening closely to musicians and developing guitars that resonate across every generation.

Revstar will continue to inspire creativity and expand musical possibilities.

Stay tuned for the next chapter in its remarkable journey!