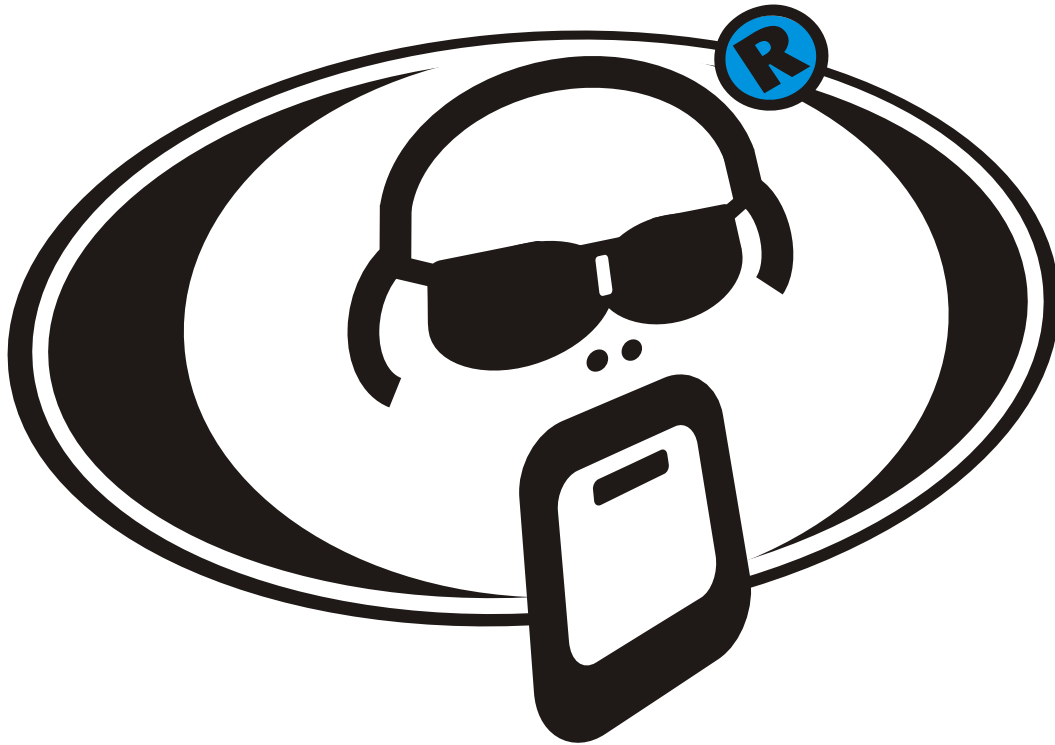




www.protectionracket.com



EST 1994





PROTECT YOUR MUSICAL INSTRUMENTS

All our cases are designed developed and road tested by gigging musicians (THAT'S US!!) And we appreciate exactly what's required from a drum & guitar case. Virtually weightless transportation and effortless to use one piece construction with maximum protection. At the end of a gig, you've no need to muck about with lids, buckles and straps, With Protection Racket you just zip and go, the inside of your vehicle free from scratches, our cases do not slide around. Our combined passions of gigging, our knowledge of the practicalities of gigging equipment and our experience in the materials used to protect instruments in transit, ensure we bring you the ULTIMATE in drum & guitar case design...

Effortless transportation & maximum protection!!

When it comes to construction of our drum cases there is no compromise in material quality. A lot of thought, experience and rigorous testing goes into every case. From concept to design to production can take up to 18 months and every case is put through it's paces by Team Protection Racket. By the time it's reached the shops we have 100% confidence in it's performance.

for design, quality, reliability, choice & confidence

nothing comes close

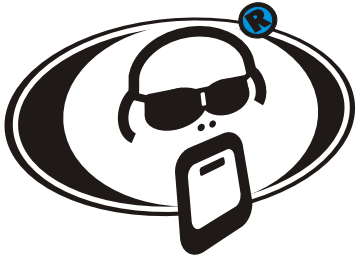
Every possible size is available for any combination of drum kit, with ease of use at the forefront of their design. Easy storage at gigs, super quick pack up time at the end, and a safe journey home. Heavy-duty zips, buckles and fabrics come as standard on all Protection Racket drum cases, from our largest bass drum case to our smallest stick bag. You'll also find a host of details designed to help you get your gear where you're going as effortlessly and comfortably as possible. Details like padded handles, ergonomically shaped, non-slip shoulder straps, smooth running wheels, internal straps and always plenty of protection, just where you need it.



Keith Carlock
Sting/Steely Dan

We Are Family





Nothing Comes Close



One Piece Construction: effortless to use no need to fuss about with lids buckles and straps. No buckles to break no straps to break. **The Stitching Thread:** Bonded nylon that doesn't deteriorate and holds the case together even if an area of stitching is breached. **Double Stitching:** To first complete the wall and two ends separately and then to join them together giving twice the security

at the corners and edges for greater protection and durability. **The Webbing Handles & Seams:** 1,500 kilo breaking strength giving large load carrying capacity. **Handles Vertically Mounted on Seam:** Both handle and seam are doubly secure by the former being stitched to the seam's 1,500 kilo breaking strength webbing, rather than to the body of the case. **Zips:** Heavy duty nylon spiral chain, indestructible, waterproof, rot proof!

Here are the materials used in the construction of our cases



Racketex

High abrasion resistance 600 denier polyester It won't fade, crack or shrink. 100% water-proof high stability in extreme climatic conditions.



Handles

Racketex as per main body of case, Lined with soft neoprene for comfort. The Underside of handle has polyprop for rigidity lined with 5mm foam. This is our first choice handle on all drum & percussion cases.



Propadd

Superior dual density foam hard on the outside and soft on the inside, giving incredible strength & rigidity whilst keeping the cases very light. The characteristics deflect and dissipate impact forces so that none of the shock passes to the instrument in transit.



Ergo Handles

Ergonomic rubber handles are used in the ends of our hardware cases with wheels. Super strong with pre-shaped easy grip for fully loaded cases that carry that bit of extra weight.



Propile

A non abrasive, synthetic fleece that removes surface moisture & preserves tonal stability between gigs. Maintains instrument well being & polishes & cleans your drums in transit!!



Webbing

1,500 kilo breaking strength giving enormous load carrying capacity. At the same time, our webbing is soft and comfortable when used in handle and shoulder strap construction.



Zip & Thread

Heavy duty nylon spiral chain, indestructible, waterproof, rot proof! **The Stitching Thread:** Bonded nylon that doesn't deteriorate and holds the case together even if an area of stitching is breached.



Size Labels

It doesn't get any easier than this! Every PR case has a size description label that identifies the drum or accessory you are transporting along with a simple and quick to read graphic showing the dimensions of the drum the case will accept.



www.protectionracket.com



Buckles

Like ALL materials and components used in the construction of our cases, our buckles are of the highest quality. Designed for ease of use, lightness and toughness.



Luggage Tag

So you turn up at a gig and all the drummers are using Protection Racket! Now you can easily identify your drums with this simple to use luggage tagging system.



Rocket Foam

Strong and rigid Propadd foam Laminated either side of our Triple A-Plex polycarbonate frame. Used in our AAA drum case range and guitar case.



Zip Pulls

Satin finished nickel plated steel zip pulleys & beautifully finished and embossed with the Protection Racket Man. Inter-locking so you can pad-lock them together for extra security. Rust proof.



Steve White

UK Drumming Legend



getting you there since 1994

BASS DRUM CASES



Thanks to Propadd P2 foam Our bass drum cases are semi-rigid and do not collapse when open & empty, this ensures easy entry and exit for your bass drum.

Super light weighing in at @ under 3.5kilos, Protection Racket bass drum cases make for effortless bass drum lifting and transportation!

For a list of available sizes of Bass Drum Cases please refer to the size chart at the back of the brochure.

Hey PR, just want to say your cases are so damn good!!! I was in a motor-way car crash with a truck a few days ago and my cymbal case was launched out the window in mid crash. After staggering out of the totalled car my band mates pointed out to me my case about 50 yards away after collecting it and fleeing across the road off the central reservation. I checked my collection of nearly every cymbal under the sun and to my amazement not a single crack/dent had appeared. THANK-YOU!!!!!!!

George Willets
United Kingdom



**1616 - 16" x 16" bass drum case
with front accessory zipped pocket**

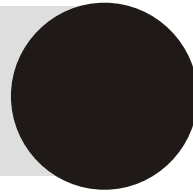
All Protection Racket bass drum case internal dimensions will accommodate all fixtures & fittings on your bass drum. We base our measurements on the shell size of the drum and allow for tom arm mount, spurs/legs and drum hoops. So, if you have a 22" x 16" bass drum order our model 1622 - 22" x 16" bass drum case for a perfect fit.



**Billy Cobham
Drumming Legend**

getting you there since 1994

FLOOR TOM CASES



All Protection Racket floor tom cases are available in RIMS sizes. So if your floor tom is fitted with any style of suspension mounting system, simply add an R to the model number you are ordering and you will receive a RIMS size case to fit your floor tom.

Please note that you will have to remove all three legs on your floor tom for easy entry and exit into your floor tom case. Please check out our range of hardware cases where you will find a variety of sizes to accommodate your hardware.

For a list of available sizes of Floor Tom Cases please refer to the size chart at the back of the brochure.

everybody knows someone who looks like "The Man"



for design, quality, reliability, choice & confidence

nothing comes close

getting you there since 1994

SNARE DRUM CASES



The best snare case in the drum case market! With over 12 sizes currently available in our snare case range, we think we've got them all covered! Our snare cases are available as standard with carrying handle and also in ruck sack strap and concealed shoulder strap on some sizes.

Our best selling snare cases are available in 12 sizes from 12" diameter to 15" diameter and 3" in depth to 8" in depth to transport your most treasured and personal drum.



**ruck sack straps
and concealed
shoulder straps
available on some sizes,
check size chart for details**



SNARE BASS DRUM PEDAL

combination cases



Both cases accept 14" snares up to a depth of 7". There is an internal Propile separator to keep spare drum heads, and a zipped pocket, 14" x 6" x 2" where you can keep a splash / hi-hat cymbals or even spare snare wires and drum keys.

The case comes with an extra compartment for a single or double pedal. This is attached to the base of the snare case, it can be unzipped all the way round for easy entry and exit of the pedal, but it is not detachable so will always be where it was last left.

Each come with a carrying handle on the lid, a padded shoulder strap and padded backpack straps to make transportation as easy and flexible as possible.



nothing comes close

getting you there since 1994

TOM CASES

All our tom cases are a highly practical 'Egg' shape. Designed to improve packing and guaranteeing a perfect tailored fit for toms with or without suspension mounts.

16 sizes available from 8" - 16" and now featuring an improved clearer labelling system making drum identification simpler. Designed to significantly improve fit and reduce cases of misidentification, helps speed up packing and unpacking as well as assisting drummers to know exactly what they have and where it is.

The main silicone label on each case now clearly states the type of drum and size it's designed to carry and protect, for instance TOM, 12" x 9". This information is now larger and easier to read. The label continues to feature the iconic PR man.



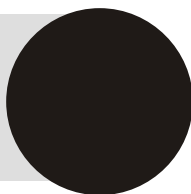
Karl Brazil
Robbie Williams
James Blunt
Feeder

100%
customer satisfaction guaranteed

for design, quality, reliability, choice & confidence
nothing comes close

getting you there since 1994

HARDWARE CASES

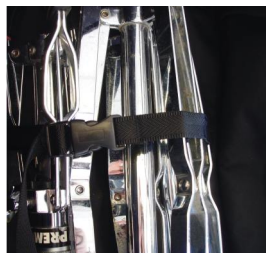


Designed wide and not too high for even distribution of your hardware. Coffin style opening for ease of use. Two webbing handles at either end to make lifting into vehicle nice & easy. Each case can accommodate up to 12 x cymbal stands. The 47" will accommodate most rack systems.

PLEASE NOTE OUR HARDWARE CASES DO NOT HAVE PROPILE FLEECE LINING, WE LINE THEM WITH RACKETEX FOR EXTRA PROTECTION.



internal straps on every hardware case ensure hardware remains held down in transit



5028 28" x 16" x 10" standard hardware bag
5036 36" x 16" x 10" standard hardware bag
5047 47" x 16" x 10" standard hardware bag

for design, quality, reliability, choice & confidence

nothing comes close

getting you there since 1994

HARDWARE CASES WHEELS



Stephen Simmonds
Lucie Diamond

Our hardware cases now come with heavy duty 4x4 wheels that are stronger, more durable and designed for smooth, no wobble transportation. The new retractable handle also makes for easier handling and manoeuvrability.

Heavy duty side fitted wheels ensure smooth & effortless transportation. No speed wobble! A 19" x 7" x 2" zipped pocket comes as standard on all sizes. Each case can transport up to 8 x cymbal stands.



SIDE FITTED SKATE WHEEL UNITS



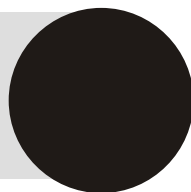
IMPORTANT SERVICE ANNOUNCEMENT

"The wheels on this hardware case are **not** designed as shock absorbers, and just like Daleks, they don't do stairs or kerbs, grinds, rail slides, ollies's, 360's or bunny hops..... we are working on it!"

- 5028W 28" x 14" x 10" hardware bag Wheels - Perfect if you have a small set up.**
- 5038W 38" x 14" x 10" hardware bag Wheels - Our most popular sized hardware cas**
- 5047W 47" x 14" x 10" hardware bag Wheels - For drums set up on a rack system.**

getting you there since 1994

ELECTRONIC DRUM KIT CASES



Our electronic kit cases have a very simple but effective internal dividing system that is totally adjustable to meet your requirements. The “snaking” divider is attached to the inside of the case via velcro and can create up to 10 compartments.

Please note that you will require a separate hardware case to transport the rack. Like acoustic drums, we believe it's good practise to separate your drums from your hardware.



ELECTRO 1 & 2

Electro 1 is 28" long x 16" high and 16" wide.
Electro 2 is 36" long x 16" high and 16" wide.



simple but effective internal snaking divider, fully adjustable



**create up to
10 internal
compartments
to suit your needs**

getting you there since 1994

ELECTRONIC DRUM

PERCUSSION PAD CASES

Deluxe electronic percussion pad cases to transport Roland SPD-S, SPD-6, SPD-20, SPD-30, HPD-10 & HPD-15. Each case has padded carrying handle and shoulder strap.



3 x Internal adjustable dividers with double thickness Propadd for maximum protection to take unit, stand & accessories. Coffin style lid for easy entry & exit of unit & large outer pocket for leads/cables/accessories. Fully adjustable /removeable shoulder strap



ELECTRO 3,4,5,6 & 7



internal rigid dividers ensure unit is kept separate from stand and accessories, main compartment has elasticated straps to hold unit in place whilst in transit



Ian Matthews
Kasablan



getting you there since 1994

CYMBAL CASES DELUXE



I know we are going to be biased, but this is without a doubt the best cymbal case you will ever own! Up to 24" in the main case & up to 15" hi-hats in the outer pocket.

Deluxe cymbal cases are available in 22" & 24" models. Both sizes come with padded carrying handle and shoulder strap as standard. A Ruck Sack model is available in both sizes.



Main compartment divider

Internal dividers

Both the inner & outer compartments have removable Propile dividers to separate your cymbals. Both compartments will hold and divide 4 cymbals. Up to 24" in the main case & up to 15" hi-hats in the outer pocket. So 4 cymbals in each compartment & 2 either side = total of 6 cymbals in each compartment.

Hi-Hat/Splash cymbal divider



getting you there since 1994

CYMBAL CASES

WHEELS DELUXE

The deluxe cymbal case on wheels has been designed to the exact same specifications as our best selling deluxe cymbal case with the addition of wheels & a retractable handle.

Front pocket dimensions of 22" x 14" x 2" deep. The rear pocket has dimensions of 16" x 13" x 2". Perfect for your set lists, music papers etc etc.



HEAVY DUTY WHEEL UNITS



Extendable legs at the front of the case ensure 100% stability when not in transit



This case is laden with features. Padded carrying handle, and padded shoulder strap fitted as standard. The rear pocket is detachable and can be used as a stand alone carry bag. The wheels and retractable handle are super strong and will get you to the gig time after time!

getting you there since 1994



CYMBAL CASES STANDARD

Simplicity personified!! This cymbal case doesn't have bells and whistles admittedly, but it has functionality coming out of its ears!! 1 x 22" ride, 1 x 20" china, 1 x 18" crash, 1 x 16" crash, 1 x set of 14" hats, 1 x 12" splash & 1 x 10" splash and there's still room for a couple more crashes!

The standard cymbal case is one of our biggest selling cases, sold worldwide since 1994, and we've never had one back! The beauty of their design is that there is nothing to fail. It's a perfect entry level cymbal case that will never let you down.



classic
black



Ronnie Vannucci
The Killers

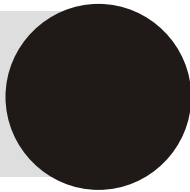
getting you there since 1994

CYMBAL CASES

AAA cymbal vault

8 internal fleece compartments with fibreglass inserts to maintain rigidity, which fit cymbals up to 24" as well as hi-hat and splash cymbal pockets on the inside lid of case up to 15" Hats. The case has an open back panel with zipped pocket for attachment to any * luggage trolley. (*not supplied)

Padded carrying handle, padded & fully adjustable shoulder strap and Pro-Grip side handles. Super tough, impact resistant, polycarbonate frame, which is fully rigid but very light weighing in at only 4Kg/ 8.8lb. Internally, Rocket Foam and Propile fleece lining ensure your cymbals will now travel in style and have the ultimate in protection.



getting you there since 1994

STICK CASES

5 styles of stick cases available in 4 different colours. Standard, Super size Standard, Deluxe and 2 x 3 pair slim line models in standard and deluxe. All with metal clips for secure attachment to floor tom. Unique to Protection Racket, clear window pockets for easy identification of stick sizes and easy to view all your accessories

All 5 styles have carrying handle and a detachable shoulder strap fitted as standard.



3 pair slim line models



6024-00 Deluxe

holds 12 pairs



6025-00 standard

holds 10 pairs



6026-00 super size

holds 16 pairs



6027-00 3-pair

holds 3 pairs



6029-00 3-pair

holds 3 pairs



Origami Foldable DRUM MAT

The Protection Racket Drum Mat playing surface has been designed to ensure you stay locked in the groove, however hard you punish your drums! Available in 2 sizes. Single bass drum set up and double bass drum set up. Both sizes are supplied with a drum mat bag.

Our new style "Origami" drum mats are now foldable. Both sizes have a totally flat seam right down the centre of the mat that allows for folding the mat in half before rolling. This halves the length of the mat when rolled and although slightly thicker on the height, they are now easier to pack, lift, transport and load into your vehicle.

Available in 2 sizes single bass drum set up and double bass drum set up

6' x 5'
8' x 5'



Our drum mat bags are perfect for the transportation and identification of your drum mat. 100% waterproof nylon case. Central carrying handle and simple but effective drawstring closing. Nice big screen printed white area for you to write your name on in permanent marker!!



AKIRA JIMBO



getting you there since 1994



DRUM MAT MARKERS

Mark your mat in minutes, no tools required, no weight added to mat, minor adjustments can be made in seconds, simple discreet & simple to use

easy as 1,2,3

Each drum mat marker pack contains the following:

30 x stand feet markers numbered 1-10 3 of each (in the coloured packs, you get 10 different colours 3 of each colour)

10 x corresponding stand markers numbered 1-10 (in the coloured packs, you get 10 different colours 3 of each colour)

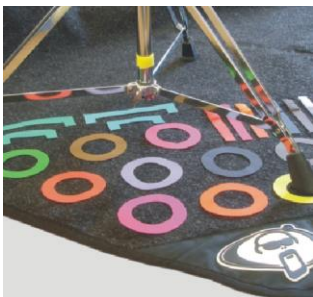
2 x bass drum marker & 1 x hi-hat stand marker

Set your kit up as you normally would on your mat

Lift the stand legs up and place 3 x circle markers on mat, place corresponding stand marker on stand. Place bass drum & hi-hat markers on bass drum & Hi-hat pedal and play!



Mark your Kit in minutes!!



getting you there since 1994

ACCESSORIES



Our accessories are designed to make life on the road just that little bit easier. We are continually developing innovative and exciting products to add to your set up that will make the setting up, packing down, and transportation of your kit effortless. Ultimate Transportation, Effortless Transportation.

Deluxe throne case

Flat bottom so the case will remain upright **when placed** down. 13" x 6"x 2" outer zipped pocket for all **your** accessories. Stick holder on inside of lid to **hold 1 x pair** of sticks.



17" wide 17" high & 8.5" deep, this case will take all saddle thrones such as the Roc n Soc. Internal separator to keep the back rest away from the saddle. Central padded handle and padded ruck sack straps fitted as standard. The deluxe throne case will also take up to 14" diameter x 8" deep snares drums...



Propile fleece seat covers

Available in 2 sizes; 12" & 15". Made from our Propile deluxe synthetic fleece, prevents moisture build up on slippery plastic thrones. The cover simply fits over the saddle and is done up using the pro-grip cord holder.

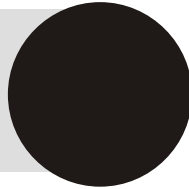


getting you there since 1994

ACCESSORIES CONTINUED

Strap On

The strap on simply fixes under the handle of your drum case handle, it really is that simple.



The strap on is a simple piece of kit that all drummers should have in their kit bag. When you are desperate for a shoulder strap, just whip it out place under the handle of the case in question and off you go...

Bass drum pedal cases

Both pedal bags come with carrying handle & detachable shoulder strap fitted. Coffin style lids that unzip all the way round and hinge down one side or easy entry of bass drum pedals.



single pedal case



Double pedal case



Bass drum muffler



The Protection Racket bass drum muffler is a very efficient muffling pillow that attaches to the bottom of the bass drum via velcro. It is completely adjustable so you can achieve your ideal bass drum sound. One size fits all bass drums for an unbelievable sound.



www.protectionracket.com

getting you there since 1994

UTILITY CASES



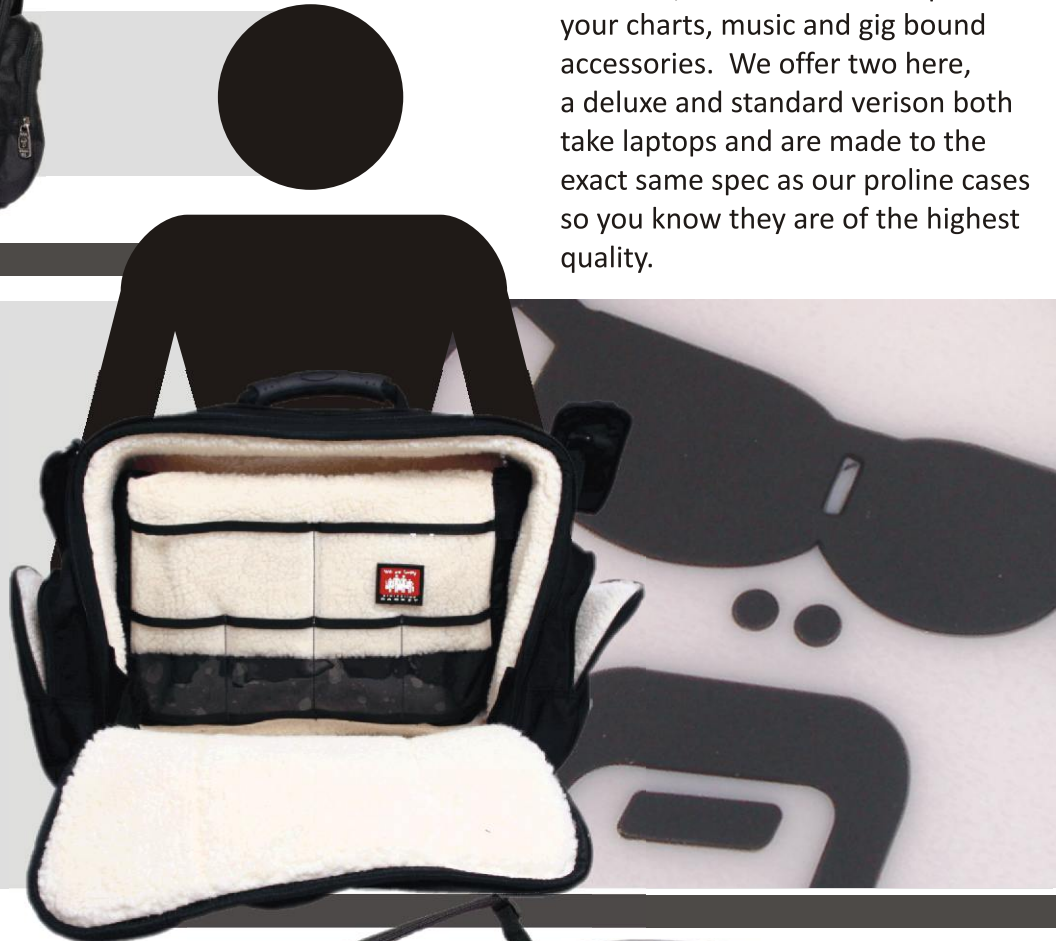
Utility cases are a must for every musician, somewhere to keep all your charts, music and gig bound accessories. We offer two here, a deluxe and standard version both take laptops and are made to the exact same spec as our proline cases so you know they are of the highest quality.

Deluxe utility

The deluxe utility case has internal Dimensions of 44L x 17W x 35H/cm, weighs in at 3.11 kg & is brimming with cool features.

This is the perfect travel companion; Double compartment fully padded business bag, Two front, two side and One back zipper pockets, Easy access to laptop compartment, hideaway ergonomic rubber carry handle, Non-slip adjustable neoprene shoulder pad, Fiberglass PE board support frame, Abrasion resistant base. Phew!

Ergonomic rubber carry handle, Non-slip adjustable neoprene shoulder pad, Fiberglass PE board support frame, Abrasion resistant base. Phew!



Standard utility

15" wide x 13" high x 4" deep this utility case is a great multi purpose laptop come musicians briefcase. 1 x large internal compartment for laptop with 2 x A4 size letter size compartments either side for paperwork/setlists/charts etc. You get another A4 compartment on the front, along with 4 pen holders & a cool clear window compartment too. Carrying handle and fully padded, fully adjustable shoulder strap fitted as standard.



getting you there since 1994

PERCUSSION CASES

CONGA & DJEMBE & BONGO

Our Conga & Djembe cases have pod style openings. They unzip all the way around the lid at the top and also down the length of the case for easy entry & exit of instrument.

Both our Conga & Djembe cases have a padded carrying handle and padded rucksack straps fitted as standard. 7" x 10" x 2" zipped outer pocket for all your accessories.

Conga/Djembe case



Djembe case

Conga & Djembe cases available in 5 sizes each

style: Djembe 10, 12, 13, 14, 15, 16 and Conga 10, 11, 12, 13, 14



The Bongo bag comes with carrying handle & detachable shoulder strap fitted. Coffin style lid that unzip all the way round and hinge down one side for easy entry of bongo. Outer

zipped pocket to take spares & accessories.



Bongo bag

getting you there since 1994



CAJON CASES

We offer 7 different styles of Cajon case in standard and large dimensions, 2 x deluxe, 1 x standard and 1 Trolley with wheels and retractable handle. All 7 Cajon cases have coffin style lids for easy entry and exit of Cajon. The inside of the cases are lined with Racketex on the standard cases and Propile on the deluxe cases.

* All 7 cases have shoulder strap and central carrying handle. The Deluxe rucksack has fully padded rucksack straps so you can transport the cajon in true comfort. The straps can be hidden behind a zipped compartment when not in use.

* The trolley version has no shoulder strap



Bodhran cases

Durable & waterproof Racketex outer material, Double Stitched throughout, Fleece lining throughout provides cushioned protection & helps skin acclimatisation, Backpack Straps, Shoulder Strap, Cushioned Handle & Hang hook, Multi Tipper holder built into lid - Stands-up to become a fast-access onstage tipper rack. Available sizes: 12, 14, 16 & 18"



getting you there since 1994

ETHNIC PERCUSSION CASES



All of our ethnic percussion cases are made to the exact same spec as our pro line drum cases. Each case has central padded carry handle and shoulder strap fitted as standard. ** Pandiero cases do not have shoulder strap.

surdo cases

The world of ethnic percussion is extremely varied with many shapes and sizes of instruments from all over the world. Protection Racket offer a host of cases that will fit your treasured instrument and protect it during your travels.

Our Surdo cases all have an internal depth of 24" and come in diameters 14", 16", 18", 20", 22" and 24".



Timba case



Our Timba cases are available in 4 sizes:

Repinque cases



Our Repinque cases are available in 3 sizes:

Pandiero cases



Our Pandiero cases are available in 3 sizes.

getting you there since 1994



FRAME DRUM CASES

Our range of Frame Drum cases are made to the exact same spec as our proline cases with the addition of a fully adjustable padded non-slip shoulder strap. The strap is removable.

Our Frame drum cases are available in 14", 16", 18", 20" & 22" diameters with a depth of 2.5"



GONG case

Our range of Gong cymbal cases are made to the exact same spec as our proline cases with the addition of a fully adjustable and padded ergonomic rucksack straps.

Our Gong cymbal cases are available in 20", 22", 24", 26", 28", 30", 32", 34", 36", 38", 40", 42", 44", 46", 48" & 50" diameters.



nothing comes close

getting you there since 1994



NUTCASE

ENTRY LEVEL CASES

Nutcases are quite simply light years ahead of the competition in this highly competitive entry level market. If you are in the market for entry level, intermediate drum cases, you'd be crazy not to check out Nutcases!

Nutcases include features perfected in the Proline range making them super tough and light weight. Made of strong, abrasive resistant outer fabric which does not stretch or shrink, they are lined with a dense, light and highly impact resistant 20mm foam core. The interior is finished with a 210-denier nylon interior to resist rips and tears. The high-quality zippers used in the Nutcases all have brushed steel pulls and the ergo dynamic handles are comfortable and hardwearing. Plus, the snare and tom Nutcases are egg shaped to allow for the snare mech and toms fitted with suspended isolation mounting systems.



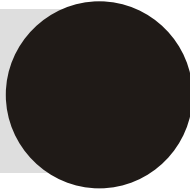
11 sets of Nutcases are available in the most popular kit configurations.



getting you there since 1994

MARCHING BAND

Marching Bass drum Marching Tenor & Marching Snare cases



Our marching band drum cases are made to the exact same spec as our proline cases. Marching Bass drum, marching snare cases and marching tenor cases are available in the most popular sizes to meet your requirements.

Our marching band bass drum cases come with pro grip side handles for extra ease of lifting and transporting of your bass.



pro grip side handles



Marching Tenor

Marching Bass

9x bass drum cases
3x tenor drum cases
3x snare cases
including HTS



Marching Snare



for design, quality, reliability, choice & confidence
nothing comes close

getting you there since 1994

AAA access all area

A new range of Rigid Cases from Protection Racket

Life on the road is tough... and your gear needs the best protection from the rough and tumble that all drums are subjected to. From knocks and dints, and falls and spills, drum cases are the answer to keeping your drums safe. We're not just talking any case... this is the best case ever offered by Protection Racket!



Introducing The Triple AAA (Access All Area – All Accidents Averted) Drum Case Range... super tough, Poly-Carbonate frame cases with all the benefits of Protection Rackets unique drum case technologies.



Triple A-Plex Rocket Foam

Utilising strong, lightweight advanced polymers, Protection Racket have created Triple A-Plex™, a Poly-Carbonate frame which offers exceptional resistance to impact. This forms the core of our new AAA drum cases, around which we have added our tried and tested inner and outer drum case components. This combination of materials has formed Protection Rackets newest material; Rocket Foam™!

Cassell
The Beatmaker
Plan B



getting you there since 1994 **AAA access all area**



Triple A-Plex Rocket Foam

Rocket Foam™ is the combined use of the new Triple A-Plex™ poly-carbonate frame, lined on the inside with 10mm and outside with 5mm closed cell foam of the frame. It really sets the new AAA range apart from the competition. The inner walls have Propile fleece lining, the outer is our 600 denier polyester Racketex, 100% waterproof. Finishing touches include new polyester/plastic/neoprene ergonomic handle for extra comfort and longevity and the heavy duty zips totally water and rot proof. Incredibly light, these cases still weigh much less than the average 2-piece hard case and are so strong you can stand on them. The perfect combination of hard and soft....



New features on the AAA range include
6" x 4" clear window pocket put in a photo of your kit
for quick and easy identification of your favourite drum
New neoprene ergonomic handle and plastic piping edges



Nick Mason Pink Floyd

Nicks custom
Dark Side of
The Moon logo
cases.



getting you there since 1994

GUITAR CASES

CLASSIC RANGE

Wilco Johnson
Dylan Howe
Norman Watt-Roy

The Blockheads



Your Guitars need protection,
Protection Racket cases will
provide the protection you
need !!! Strong, reliable, durable,
tough and heavy duty, can you
afford not to have their protection?

Spec for Classic range

Racketex™ Outer

Padding: **20mm ROCKETFOAM™**

Inner **Velvetex™** lining

Inner neck support
and retaining strap

Combination outer pockets

Classic range model numbers

7050 Electric

7051 Bass

7052 Classical

7053 Acoustic

7054 Acoustic Bass



for design, quality, reliability, choice & confidence

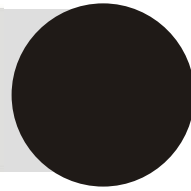
nothing comes close



getting you there since 1994

GUITAR CASES

DELUXE RANGE



Spec for Deluxe range: **Racketex** Outer
Padding: **26mm ROCKET FOAM**
Inner **Propile** lining, Inner neck support
retaining strap outer pockets stationary
compartments.

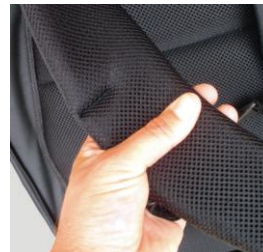
Deluxe range model numbers:

- 7150 Electric
- 7151 Bass
- 7152 Classical
- 7153 Acoustic
- 7154 Acoustic Bass



for design, quality, reliability, choice & confidence

nothing comes close



getting you there since 1994

GUITAR CASES

Gig Bags

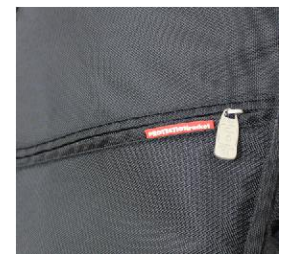
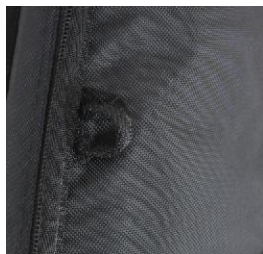
Quite simply, Protection Racket Gig Bags are the most stylish, practical and affordable gigs bags that money can buy. Available for Electric guitar, Bass guitar and Acoustic guitar.

Gig Bag specifications

1. Outer = Racketex as per drum cases
2. Inner = Velvetex (soft but hard wearing brushed cotton) + Racketex square's at Neck & Bridge areas + adjustable foam neck block & guitar base block
3. Foam = high density 10mm foam
4. 2 x pockets on front. 1. Bottom pocket (38cm x 26cm) Top Pocket. 2. (25cm x 18cm)
5. new RED Protection Racket silicone badge
6. AAA style handle, as used on AAA drum cases
7. 2 x plastic feet on base of case.
8. Padded ergonomic and breathable, fully adjustable shoulder straps
9. 1 x hanging D-ring (plastic) at top of case 1 x hanging (webbing) d-ring on front side of case by top pocket
10. Luggage tag on back of case at top

internal dimensions:

Guitar: 14 1/2" (lower bow) x 41 1/2" (length) x 4" (depth)
Acoustic: 16" (lower bow) x 42" (length) x 5" (Depth)
Bass: 14 1/2" (lower bow) 48 3/4" (length) x 4" (depth)



for design, quality, reliability, choice & confidence

nothing comes close

TOURING LUGGAGE

Sean Barry
(Ollie Murs)

Karl Brazil
(Robbie Williams)

Our luggage has been designed with the travelling musician in mind. You know you can trust us to get your equipment to the venue in one piece, the We Are Family range means we can take good care of you too.

#WEAREFAMILY



9418-00- Streamline Backpack

45cm x 28cm x 16cm

- Anatomical shape for comfort Large easy access main compartment.
- Breathable foam cushion on back panel for comfort and ventilation.
- One Velcro side pocket, one mesh side pocket.
- Non-slip shoulder strap.
- Earphone channel.
- Transparent address window.
- Abrasion resistant bottom.
- Padded Phone/Pod pocket.



9419-00 - Classroom Backpack

51cm x 31cm x 17cm

- Thermo moulded EVA foam back.
- One main compartment with large zipper access plus one drawstring compartment with expandable zip.
- One front zipper pocket with organizer.
- Padded carry handle.
- Non-slip shoulder strap.
- Earphone channel.
- Transparent address window.
- Detachable mobile phone pocket.
- Padded phone/pod pocket .



6279-10 - Business Backpack

45cm x 35cm x 20cm

- Anatomical shape for comfort Large easy access main compartment.
- Two zippered side pockets
- Three zippered front pockets
- Side loading zippered lap top pocket
- Internal zippered pocket and compartments
- Non-slip shoulder strap.
- Earphone channel.
- Transparent address window.
- Abrasion resistant bottom.
- Padded phone/pod pocket.





4277-37 - Roadies Back Pack

50cm x 25cm x 14cm

- Anatomical shape for comfort Large easy access main compartment.
- Breathable foam cushion on back panel for comfort and ventilation.
- Two zipped side pocket, 2 x zipped front pocket.
- Vented back panel & padded shoulder straps.
- Transparent address window.
- Abrasion resistant bottom.
- Internal laptop compartment with neoprene sprung base.



4276-86 (13) 4276-35 (15) 13" & 15" TM Briefcase

13" x 3" & 15" x 3"

- AAA padded ergo handle and detachable shoulder strap.
- One main compartment to accept 13" or 15" laptop
- One front zipper pocket with on front flap.
- One zipped pocket on rear.
- Diamond PVC hardwearing base.



9260-06 - Musicians Tool Kit Bag

37cm x 24cm x 8cm

- Central carrying handle.
- Unzips all the way round for easy access to the main compartment.
- Six internal zippered and 100% waterproof tool and accessory compartments.
- 3 x elasticated Sharpie holders.
- Transparent address window.
- The perfect accessory for the transportation of your tools and accessories.



9260-22 - Multi-Purpose Holdall



26cm x 20cm x 10cm

- 50 ltr General purpose multi pocketed carry holdall.
- Shoulder strap and carry handle.
- Easy entry all round zipper for easy packing.
- Internal compartments.
- Internal shoe compartment.



9273-89 - iPad/Tablet Bag



28cm x 20.5cm x 5cm

- Slimline carry bag with handle and detachable shoulder strap.
- One main compartment to accept iPad/Tablet
- Two front zipper pocket with on front flap.
- One zipped pocket on rear.



7279-56 - The Handbag



34cm x 19cm x 19cm

- 1 x central top zip opening compartment.
- Main compartment has inside 20cm Long x 10cm High x 2.5cm deep 100% cotton lined glasses/mobile phone with popper closing.
- Outside pocket: 20cm Long x 10cm High x 2.5cm deep 100% zipped & cotton lined sunglasses side pocket
- 2 x 19cm High x 19cm wide x 5cm deep zipped pockets on each end of bag:
- Pocket 1 contains 14cm x 14cm x 2cm zipped pocket and swivel key hook
- Pocket 2 contains elasticated strap for holding accessories.
- Super strong neoprene backed carrying handle
- All corners & base reinforced with hardwearing PVC diamond heavy duty material



4277-36 - Carry on Touring Overnight Bag

54cm x 37cm x 19cm



- 50 ltr General purpose multi pocketed carry holdall.
- Skate wheels and retractable handle that can be hidden behind zip.
- Easy entry all round zipper for easy packing.
- 1 x main internal zipped mesh compartment.
- 1 x large outer zipped pocket.
- Top handle side handle & sunglasses pocket.



4277-16 - TCB Carry on Bag

54cm x 37cm x 19cm



- Unzips all the way round for easy access to the main compartment.
- Large zippered outer compartment with seven internal accessory compartments.
- Large zippered pocket that runs the length of the case on the front.
- Side Zippered pocket with passport holder.
- Retractable handle that can be hidden away behind zip.
- Padded ruck sack straps that can be stowed in zipper compartment on back.



9260-23 - TCB Carry on Bag Laptop

54cm x 37cm x 19cm



- Unzips all the way round for easy access to the main compartment.
- Large zippered outer compartment with seven internal accessory compartments.
- Large zippered pocket that runs the length of the case on the front.
- Side Zippered pocket with passport holder.
- Retractable handle that can be hidden away behind zip.
- Padded ruck sack straps that can be stowed in zipper compartment on back.
- 1 x neoprene laptop case.



4217-17 - TCB Suitcase 65ltr

68cm x 37cm x 32cm

- Heavy Duty wheels and retractable handle
- Internal zipped shoe compartment
- Easy entry all round zipper, case splits in two for easy packing
- 2 x internal mesh zipped compartments for keeping clean clothes from worn clothes
- Internal elasticated hold down straps, the ultimate touring suitcase



4277-26 - TCB Suitcase 80ltr

82cm x 42cm x 39cm

- Heavy Duty wheels and retractable handle
- Internal zipped shoe compartment
- Easy entry all round zipper, case splits in two for easy packing
- 2 x internal mesh zipped compartments for keeping clean clothes from worn clothes
- Internal elasticated hold down straps, the ultimate touring suitcase



9273-99- Mini Storage Bag Large

25cm x 20cm x 9cm

- 4 x zipped mesh pockets
- 1 x open main compartment
- Easy entry all round zipper, case splits in two for easy packing
- Carrying handle & carabiner clip



for design, quality, reliability, choice & confidence

nothing comes close



9260-19 - Washbag

26cm x 20cm x 10cm

- Anatomical shape for ease of use
- Carrying handle and hanger hook.
- Zippered pocket on back and on inside.
- Several internal mesh compartments for all your travel products.
- 100% waterproof nylon interior
- Machine washable
- The perfect travel washbag for wherever you are on the globe.



9263-29 - Wallet

29cm x 14cm x 2cm

- Red & White Man logo.
- Velcro closing.
- Zipped coin compartment.
- 3 x Central credit card holders
- Clear window compartment for driving licence.
- Large main compartment for notes and receipts.



9263-30 - Wallet

29cm x 14cm x 2cm

- Black & White Man logo.
- Velcro closing.
- Zipped coin compartment.
- 3 x Central credit card holders
- Clear window compartment for driving licence.
- Large main compartment for notes and receipts.



#WE ARE FAMILY

PRODUCT LIST

This is the full list of our current products, their model numbers, sizes and descriptions.

Please note that the size relates to the SHELL size of the drum you are looking to case. The internals of all our cases take into account ALL fixtures and fittings: hoops, tom arm mounts, snare mechs, legs, bass drum spurs etc.

As new products are added to the range, we will update the Protection Racket website so please check out the site regularly for updates.

Thanks for considering Protection Racket!

**** Please note that not all products will be available in all Countries ****



www.protectionracket.com

BASS DRUM CASES

1418-00 18" x 14" bass drum case
1616-00 16" x 16" bass drum case
1618-00 18" x 16" bass drum case
1818-00 18" x 18" bass drum case
1220-00 20" x 12" bass drum case
1420-00 20" x 14" bass drum case
1620-00 20" x 16" bass drum case
1720-00 20" x 17" bass drum case
1820-00 20" x 18" bass drum case
2020-00 20" x 20" bass drum case
2420-00 20" x 24" bass drum case
822-00 22" x 8" bass drum case
1422-00 22" x 14" bass drum case
1622-00 22" x 16" bass drum case
1722-00 22" x 17" bass drum case
1822-00 22" x 18" bass drum case
2022-00 22" x 20" bass drum case
2222-00 22" x 22" bass drum case
2422-00 22" x 24" bass drum case
1423-00 23" x 14" bass drum case
1723-00 23" x 17" bass drum case
1424-00 24" x 14" bass drum case
1624-00 24" x 16" bass drum case
1824-00 24" x 18" bass drum case
2024-00 24" x 20" bass drum case
2224-00 24" x 22" bass drum case
1426-00 26" x 14" bass drum case
1626-00 26" x 16" bass drum case
1826-00 26" x 18" bass drum case
2026-00 26" x 20" bass drum case
2226-00 26" x 22" bass drum case

FLOOR TOM CASES

2014-00 14" x 14" floor tom case
2014R-00 14" x 14" floor tom case RIMS
2019-00 15" x 15" floor tom case
2019R-00 15" x 15" floor tom case RIMS
2015-00 14" x 16" floor tom case
2015R-00 14" x 16" floor tom case RIMS
2013-00 18" x 14" floor tom case
2013R-00 18" x 14" floor tom case RIMS
2010-00 16" x 14" floor tom case
2016-00 16" x 16" floor tom case
2017-00 18" x 16" floor tom case
2017R-00 18" x 16" floor tom case RIMS
2018-00 18" x 18" floor tom case
2018R-00 18" x 18" floor tom case RIMS

FRAME DRUM CASES

9514-00 14" X 2.5" Frame Drum Case
9516-00 16" X 2.5" Frame Drum Case
9518-00 18" X 2.5" Frame Drum Case
9520-00 20" X 2.5" Frame Drum Case
9522-00 22" X 2.5" Frame Drum Case

TOM CASES

4006-10 8" x 6" egg shaped tom case
4008-10 8" x 8" egg shaped tom case
4010-10 10" x 9" egg shaped tom case
4012-10 12" x 10" egg shaped tom case
4013-10 13" x 11" egg shaped tom case
4014-10 14" x 12" egg shaped tom case
4015-10 15" x 13" egg shaped tom case
4016-10 16" x 14" egg shaped tom case
4101-10 10" x 10" egg shaped tom case
4121-10 12" x 12" egg shaped tom case
4141-10 14" x 14" egg shaped tom case
5010-10 10" x 8" egg shaped tom case
5012-10 12" x 8" egg shaped tom case
5013-10 13" x 9" egg shaped tom case
5014-10 14" x 10" egg shaped tom case
5015-10 15" x 12" egg shaped tom case

HARDWARE CASES

5029-00 29" Economy hardware bag
5028-00 28" x 16" x 10" hardware bag
5030CZ-00 30" x 5.5" x 5.5" hardware bag
5032-00 30" x 11" x 7"
5036-00 36" x 16" x 10" hardware bag
5031-00 42" x 5.5" x 5.5" hardware case
5047-00 47" x 16" x 10" hardware bag
5028W-09 28" x 14" x 10" hardware bag wheels
5038W-09 38" x 14" x 10" hardware bag wheels
5047W-09 47" x 14" x 10" hardware bag wheels

HARDWARE SHEAVES

9028-0028" Hardware Sheath
9038-0038" Hardware Sheath
9047-0047" Hardware Sheath

ELECTRONIC HARDWARE CASES

1110-01 • Electro 1 28" x 16" x 16"
1110-02 • Electro 2 36" x 16" x 16"
1110-03 • Electro 3 Roland SPD-S Case
1110-04 • Electro 4 Roland SPD 6 Case
1110-05 • Electro 5 Roland SPD-20 Case
1110-06 • Electro 6 Roland HPD-10 Case
1110-07 • Electro 7 Roland HPD-15 Case

GONG CYMBAL CASES

7279-41 20" Gong Case
7279-42 22" Gong Case
7279-43 24" Gong Case
7279-44 26" Gong Case
7279-45 28" Gong Case
7279-46 30" Gong Case
7279-47 32" Gong Case
7279-48 34" Gong Case
7279-49 36" Gong Case
7279-50 38" Gong Case
7279-51 40" Gong Case
7279-52 42" Gong Case
7279-53 50" Gong Case

EST 1994



SNARE DRUM CASES

- 3003-00 13" x 3" piccolo snare case
3004-00 14" x 4" piccolo snare case
3005-00 15" x 6½" free floater snare case
3006-00 14" x 6½" standard snare case
3006C-00 14" x 6½" standard snare case
concealed shoulder strap
3006R-00 14" x 6½" standard snare case
ruck sack straps
3007-00 13" x 5" piccolo snare case
3008-00 12" x 7" snare case
3009-00 14" x 8" snare case
3010-00 10" x 5" piccolo snare case
3011-00 14" x 5½" snare case
3011C-00 14" x 5½" snare case
concealed shoulder strap
3011R-00 14" x 5½" snare case
ruck sack straps
3012-00 12" x 5" piccolo snare case
3013-00 13" x 7" snare case
3014-00 13" x 6½" snare case

SNARE & BASS DRUM PEDAL CASES

- 3275-46 Snare & Double
Bass Drum Pedal Case
8253-72 Snare & Single
Bass Drum Pedal Case

CYMBAL CASES

- 6020-00 DELUXE CYMBAL BAG 22"
6020R-00 DELUXE CYMBAL BAG
RUCK SACK STRAPS 22"
6021-00 DELUXE CYMBAL BAG 24"
6021T-00 DELUXE CYMBAL TROLLEY 24"
6021R-00 DELUXE CYMBAL BAG RUCK
SACK STRAPS 24"
6022-00 STANDARD CYMBAL BAG 22"
A6021-00 AAA Cymbal Vault

STICK CASES

- 6024-00 Stick Case Deluxe Ergo Handle
6025-00 Stick Case Standard Pocket
6026-00 Stick Case Deluxe Super Size
6027-00 Stick Case Standard 3-Pair
6029-00 Stick Case Deluxe 3-Pair

NUTCASES SETS

- N1800-50 1 X 1822, 1 X 2016, 1 X 3006, 1 X 5010, 1 X 5129
N1800-60 1 X 1822, 1 X 3011, 1 X 4014, 1 X 1 X 5010, 1 X 5129
N1800-70 1 X 1824, 1 X 2014, 1 X 2016, 1 X 3006, 1 X 5129
N1800-10 1 X 1822, 1 X 2014, 1 X 2016, 1 X 3006, 1 X 5129
N1800-20 1 X 1820, 1 X 3011, 1 X 4014, 1 X 5010, 1 X 5129
N1800-30 1 X 1824, 1 X 2016, 1 X 2017, 1 X 3006, 1 X 6013
N1800-40 1 X 1822, 1 X 2016, 1 X 3006, 1 X 4012, 1 X 4013
N1800-80 1 X 1620, 1 X 3011, 1 X 4010, 1 X 4012, 1 X 4014
N1800-90 1 X 1822, 1 X 3011, 1 X 4010, 1 X 4012, 1 X 4014
N1800-11 1 X 1824, 1 X 2016, 1 X 3006, 1 X 5129
N1800-12 1 X 1620, 1 X 3011, 1 X 5010R, 1 X 5129, 1 X 2014-00

ACCESSORIES

- 9020-00 DRUM MAT 2.00m x 1.6m
9027-00 DRUM MAT 2.75m x 1.6m
9022-01 DRUM MAT MARKER PACK numbered
9022-00 DRUM MAT MARKER PACK Coloured
9018-00 DRUM MAT CARRY CASE 2.00m x 1.6m
9018-01 DRUM MAT CARRY CASE 2.75m x 1.6m
9021-00 UTILITY BAG
9023-00 BASS DRUM MUFFLER
9024-00 FLEECE SEAT COVER 12"
9025-00 FLEECE SEAT COVER 15"
9026-00 THRONE CASE
9031-00 STRAP ON stand alone shoulder strap

PERCUSSION CASES

- 8310-00 10" x 30" DELUXE conga (REQUINTO)
8311-00 11" x 30" DELUXE conga (QUINTO)
8312-00 11.75" x 30" DELUXE conga (CONGA)
8313-00 12" x 30" DELUXE conga (TUMBA)
8314-00 14" x 30" DELUXE conga (SUPER TUMBA)
2272-56 Bongo Bag 19" x 11" x 8"
8253-72 Single bass drum pedal bag
8115-00 Double bass drum pedal bag
9110-00 10" x 24" DELUXE djembe bag
9112-00 12" x 24" DELUXE djembe bag
9113-00 13" x 26" DELUXE djembe bag
9114-00 14" x 26" DELUXE djembe bag
9115-00 15" x 28" DELUXE djembe bag
9116-00 16" x 29" DELUXE djembe bag
9017-00 18" x 15" percussion bag

CAJON CASES

- 9122-00 Cajon Deluxe - 52cm x 30.5cm x 30.5cm
9122-01 Cajon Deluxe Large - 52cm x 32.5cm x 32.5cm
9123-00 Cajon Classic - 52cm x 30.5cm x 30.5cm
9123-01 Cajon Classic Large - 52cm x 30.5cm x 30.5cm
9124-00 Cajon Deluxe ruck sack - 30.5cm x 30.5cm x 52cm
9124-01 Cajon Deluxe RS Large - 32.5cm x 32.5cm x 52cm
9125-01 Cajon Case Trolley - 52cm x 30.5cm x 30.5cm

BODHRAN CASES

- 9118-00 BOD12 12" Bodhran case
9119-00 BOD14 14" Bodhran case
9120-00 BOD16 16" Bodhran case
9120-60 BOD166 16" x 6" Bodhran case
9121-00 BOD18 18" Bodhran case

ETHNIC PERCUSSION CASES

- 9914-00 SUR14 - 14" Surdo case
9916-00 SUR16 - 16" Surdo case
9918-00 SUR18 - 18" Surdo case
9920-00 SUR20 - 20" Surdo case
9922-00 SUR22 - 22" Surdo case
9924-00 SUR24 - 24" Surdo case
9812-00 TIM12 - 12" Timba
9813-00 TIM13 - 13" Timba
9814-00 TIM14 - 14" Timba
9814-01 TIM142 - 14" x 35" Timba
9708-00 REP08 - 8" Repinque
9710-00 REP10 - 10" Repinque
9712-00 REP12 - 12" Repinque
9610-00 PAN10 - 10" Pandiero
9611-00 PAN11 - 11" Pandiero
9612-00 PAN12 - 12" Pandiero

MARCHING BAND DRUM CASES

- M2014-00 20" x 14" Marching bass drum case
M2214-00 22" x 14" Marching bass drum case
M2414-00 24" x 14" Marching bass drum case
M2610-00 26" x 10" Marching bass drum case
M2614-00 26" x 14" Marching bass drum case
M2810-00 28" x 10" Marching bass drum case
M2812-00 28" x 12" Marching bass drum case
M2814-00 28" x 14" Marching bass drum case
M2816-00 28" x 16" Marching bass drum case
M3016-00 30" x 16" Marching bass drum case
M3216-00 32" x 16" Marching bass drum case
M1410-00 14" x 10" Marching snare case
M1412-00 14" x 12" Marching snare case
M1412-01 14" x 12" Marching HTS snare case
M1512-00 15" x 12" Marching Tenor drum case
M1612-00 16" x 12" Marching Tenor drum case
M1812-00 18" x 12" Marching Tenor drum case

AAA RIGID CASES

- A1424-00 - 24" x 14" Rigid Bass drum case
A1426-00 - 26" x 14" Rigid Bass drum case
A1820-00 - 20" x 18" Rigid Bass drum case
A1822-00 - 22" x 18" Rigid Bass drum case
A1824-00 - 24" x 18" Rigid Bass drum case
A2022-00 - 22" x 20" Rigid Bass drum case
A2014-00 - 14" x 14" Rigid Floor tom case
A2016-00 - 16" x 16" Rigid Floor tom case
A3006-00 - 14" x 6" Rigid Snare case
A3009-00 - 14" x 8" Rigid Snare case
A3011-00 - 14" x 5" Rigid snare case
A3013-00 - 13" x 7" Rigid snare case
A4008-00 - 8" x 8" Rigid Tom case
A4010-00 - 10" x 9" Rigid Tom case
A4012-00 - 12" x 10" Rigid Tom case
A4013-00 - 13" x 11" Rigid Tom case
A4014-00 - 14" x 12" Rigid tom case
A4015-00 - 15" x 13" Rigid Tom case
A4016-00 - 16" x 14" Rigid Tom case
A5010-00 - 10" x 8" Rigid Tom case
A5012-00 - 12" x 8" Rigid Tom case
A5129-00 - 12" x 9" Rigid Tom case
A5013-00 - 13" x 9" Rigid Tom case
A5015-00 - 15" x 12" Rigid Tom case

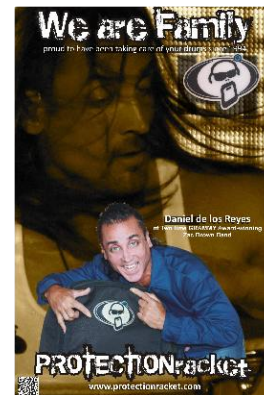
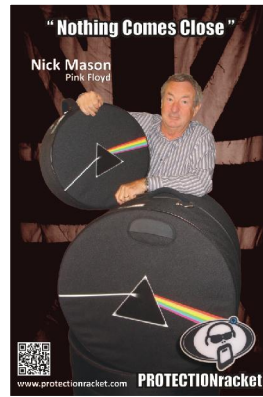
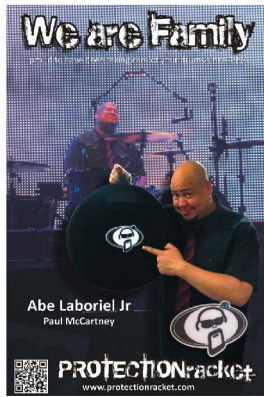
GUITAR CASES

- 7050-00 Electric guitar gig bag CLASSIC
7051-00 Bass guitar gig bag CLASSIC
7052-00 Classic guitar gig bag CLASSIC
7053-00 Acoustic guitar gig bag CLASSIC
7054-00 Acoustic Bass guitar gig bag CLASSIC
7150-00 Electric guitar gig bag DELUXE
7151-00 Bass guitar gig bag DELUXE
7152-00 Classic guitar gig bag DELUXE
7153-00 Acoustic guitar gig bag DELUXE
7154-00 Acoustic Bass guitar gig bag DELUXE
5278-06 Guitar Gig Case
5278-22 Acoustic Gig Case
5278-23 Bass Gig Case

EST 1994



Join the family // // **#wearefamily**



**for design, quality, reliability, choice & confidence
for drums, cymbals, hardware, sticks, accessories,
percussion & guitars NOTHING COMES CLOSE....**



www.protectionracket.com

