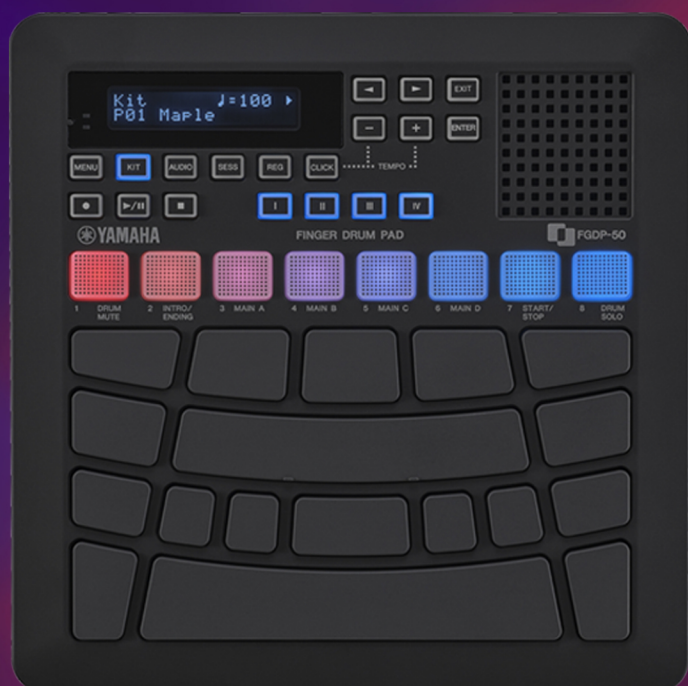


 **FGDP-50**  
**FGDP-30**

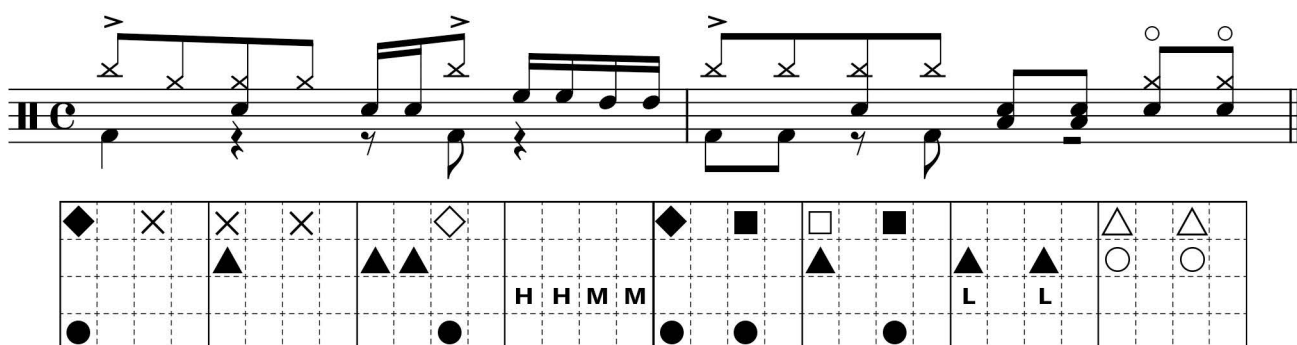
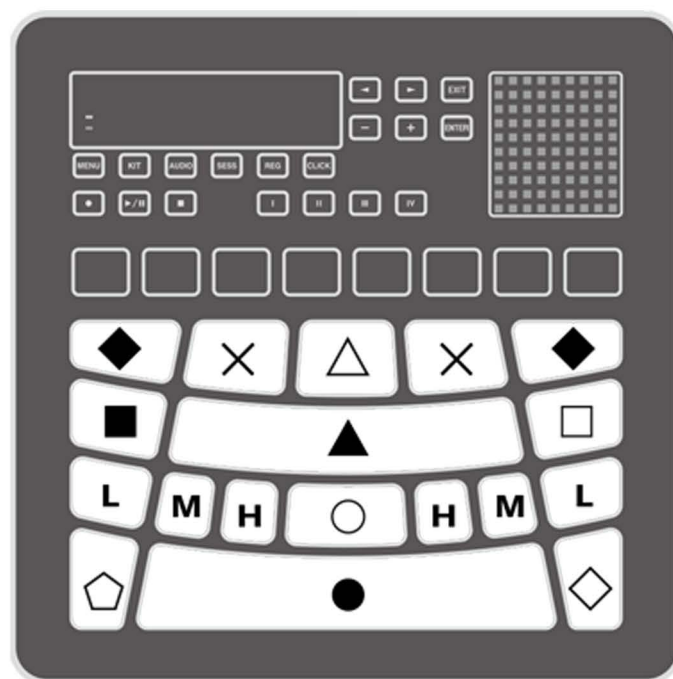


# YAMAHA FINGER DRUM PAD LESSON VIDEO

## Fill-in ② SCORE

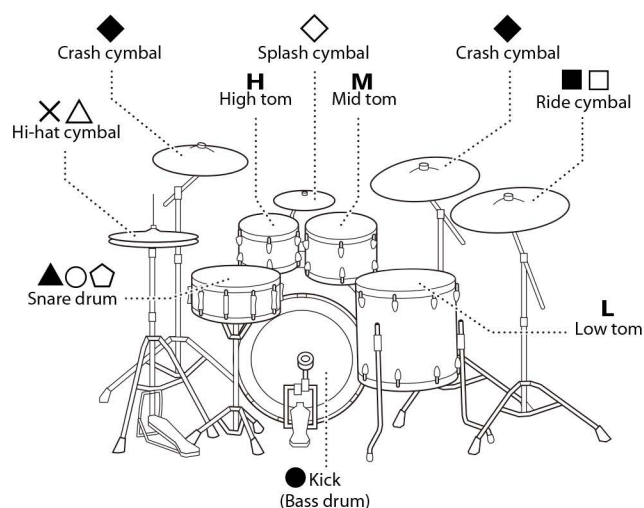


# The pad positions are indicated by the following symbols



## Factory-shipped instrument sounds (preset kit 1)

◆	Crash cymbal
×	Hi-hat cymbal (close)
△	Hi-hat cymbal (open)
■	Ride cymbal (cup)
□	Ride cymbal (bow)
▲	Snare drum (open shot)
○	Snare drum (open rim shot)
L	Low tom
M	Mid tom
H	High tom
●	Kick (bass drum)
◐	Snare drum (closed rim shot)
◇	Splash cymbal



# Fill-in ②

## Basic

♩ = 100

▲▲▲	▲▲▲	▲▲▲	▲▲▲	▲▲▲	▲▲▲	▲▲▲	▲▲▲
-----	-----	-----	-----	-----	-----	-----	-----

▲▲▲	▲▲▲	▲▲▲	▲▲▲	▲▲▲	▲▲▲	▲▲▲	▲▲▲
-----	-----	-----	-----	-----	-----	-----	-----

## Variations

### ■ Var.1

♩ = 100

▲▲▲	H H H	M M M	L L L	▲▲▲	H H H	M M M	L L L
-----	-------	-------	-------	-----	-------	-------	-------

▲▲▲	H H H	M M M	L L L	▲▲▲	H H H	M M M	L L L
-----	-------	-------	-------	-----	-------	-------	-------

## Fill-in ②

### ■ Var.2

$\text{♩} = 100$

The image displays two staves of musical notation. The top staff is in C major (one sharp) and the bottom staff is in D major (two sharps). Both staves show a sequence of eighth notes with 'x' marks above them, indicating specific points of interest or analysis. The notation includes a key signature change from C major to D major between the two staves.

[illegible][illegible]

### ■ Var.3

The image shows a musical score for the song "The Rose Tree". It consists of two staves. The top staff is for the vocal melody, and the bottom staff is for the piano accompaniment. The key signature is one flat (B-flat), and the time signature is common time (C). The tempo is marked as "♩ = 100". The melody is a simple, catchy tune, and the piano accompaniment provides a steady, rhythmic foundation. The score is written in a clear, legible font, and the notes are well-placed on the staves.

A 2x12 grid with dashed lines. The top row contains symbols: an empty cell, a black triangle, an empty cell, an empty cell, the letter 'H', an empty cell, an empty cell, the letter 'M', an empty cell, an empty cell, the letter 'L', an empty cell, a black triangle, an empty cell, an empty cell, the letter 'H', an empty cell, an empty cell, the letter 'M', an empty cell, an empty cell, the letter 'L', and an empty cell. The bottom row contains black dots in every cell.

# Fill-in ②

## Let's Try!

♩ = 100

The musical notation consists of four staves, each representing a different key signature: C major, D major, E major, and F major. Each staff shows a sequence of notes and rests for a drum set, with a tempo of 100 beats per minute. The notation includes various drum symbols (e.g., snare, tom, cymbal) and rests, indicating a specific rhythm pattern.

◆	×	×	×	×	×	×	×	▲	▲	▲	▲	▲	▲	▲	▲	▲	▲
●				●													

◆	×	×	×	×	×	×	×	▲	▲	▲							
●				●							H	H	H	M	M	M	L

◆	×	×	×	×	×	×	×	▲	▲	▲	▲	▲	▲	▲	▲	▲	▲
●				●													

◆	×	×	×	×	×	×	×	▲	▲	▲							
●				●							H		M		L		