

 **FGDP-50**  
**FGDP-30**



# FGDP

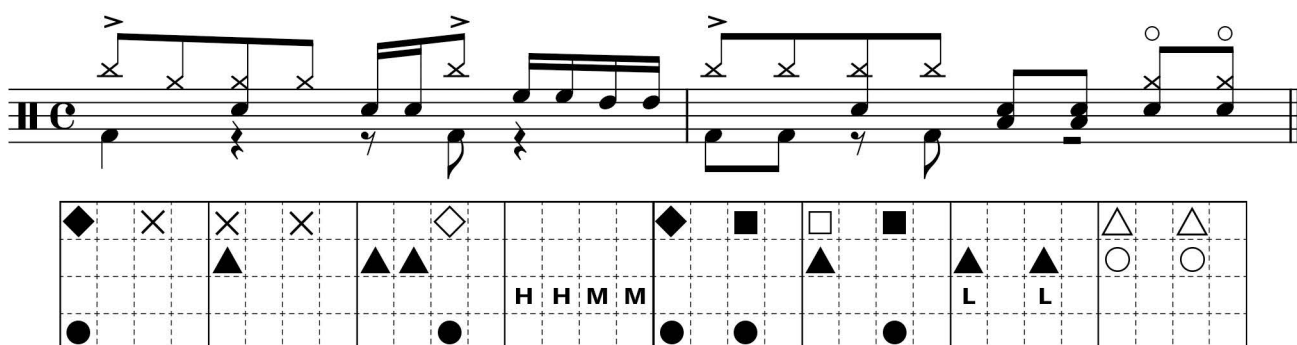
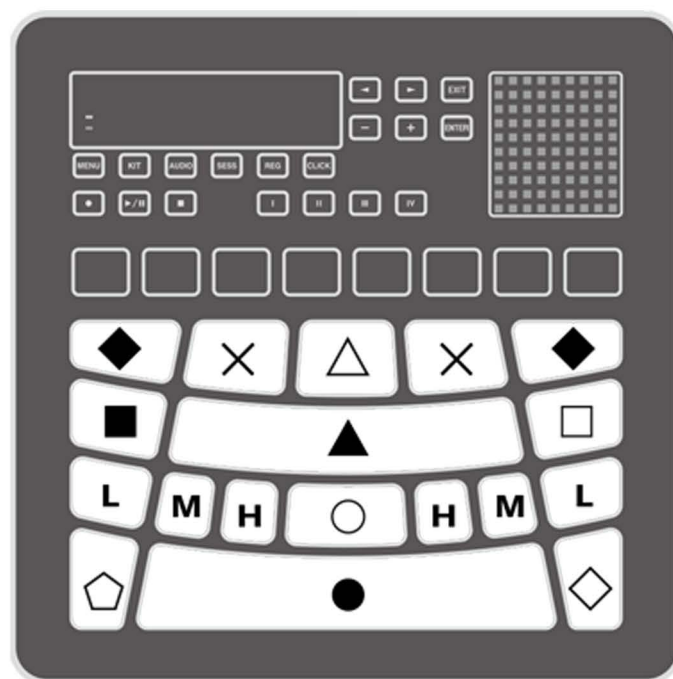
## ADVANCED LESSON

### FUNK

### SCORE

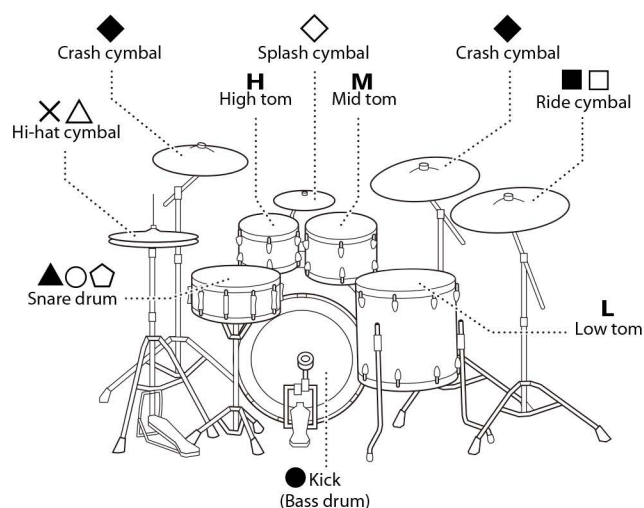


# The pad positions are indicated by the following symbols



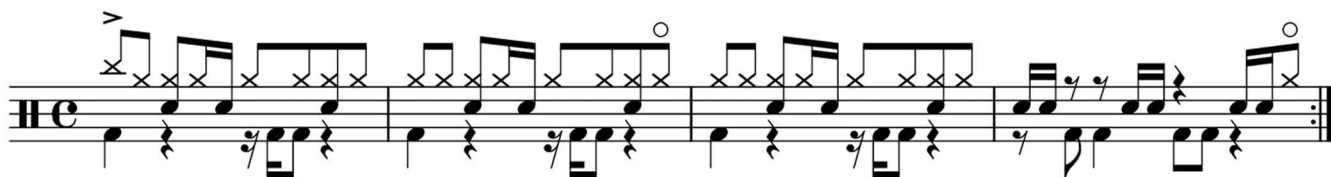
## Factory-shipped instrument sounds (preset kit 1)

|   |                              |
|---|------------------------------|
| ◆ | Crash cymbal                 |
| × | Hi-hat cymbal (close)        |
| △ | Hi-hat cymbal (open)         |
| ■ | Ride cymbal (cup)            |
| □ | Ride cymbal (bow)            |
| ▲ | Snare drum (open shot)       |
| ○ | Snare drum (open rim shot)   |
| L | Low tom                      |
| M | Mid tom                      |
| H | High tom                     |
| ● | Kick (bass drum)             |
| ◐ | Snare drum (closed rim shot) |
| ◇ | Splash cymbal                |

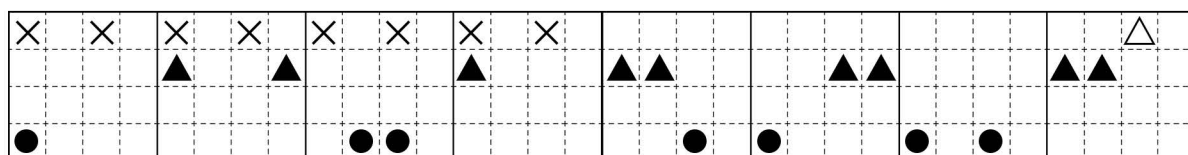
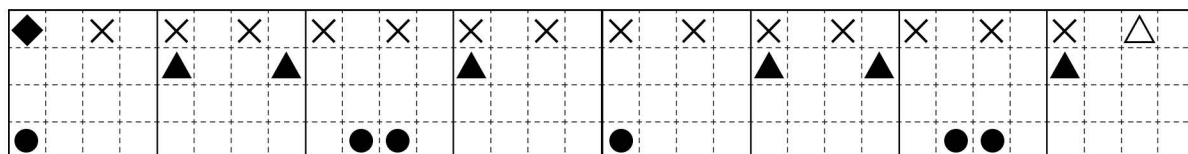


# Funk

FGDP-50 : P18  
FGDP-30 : No.16 **Funk**



\* For "Practice Slowly", there is no repeat.



×2

\* For "Practice Slowly", there is no repeat.